



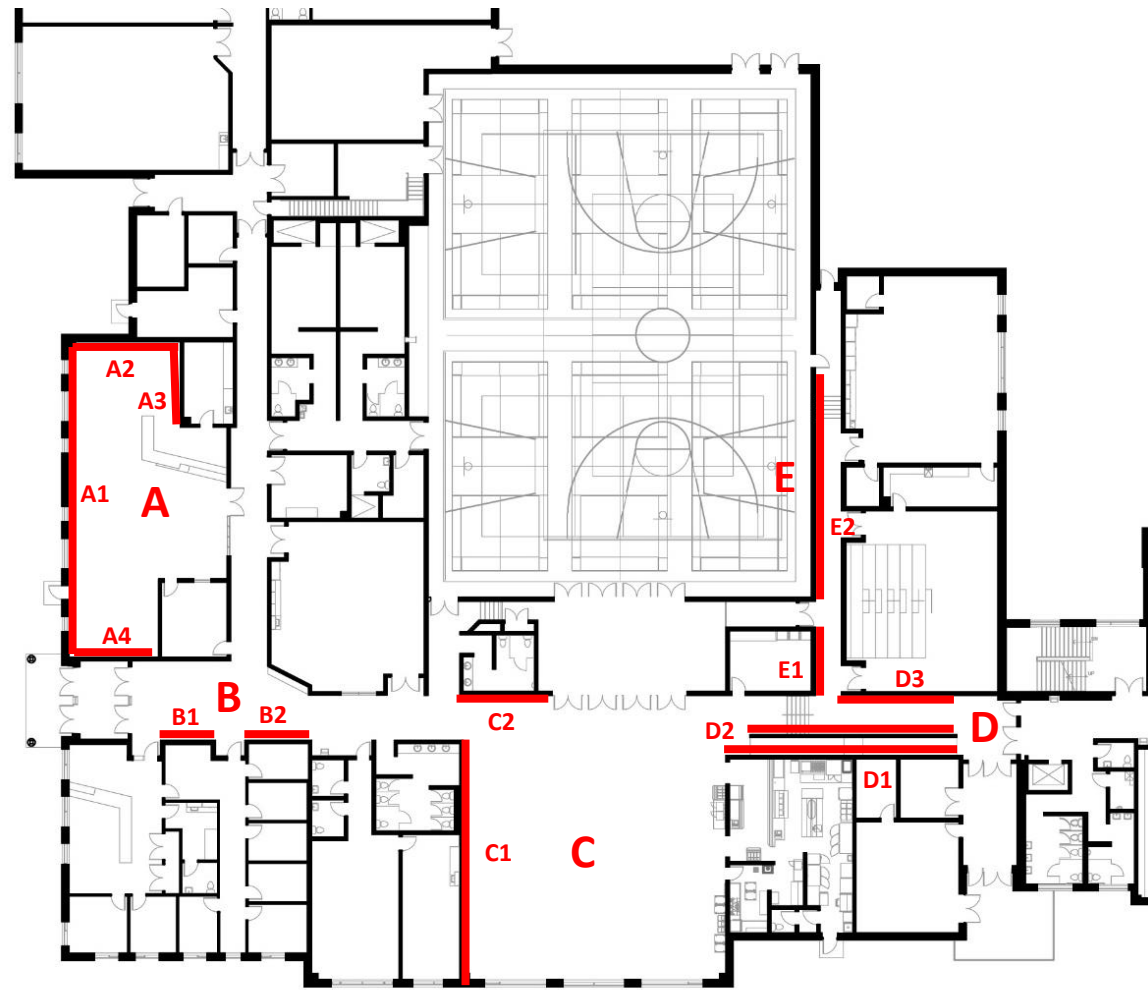
# Arc-en-ciel School

## Potential Public Art Locations Document

### Public Art Call 2021

Artists are encouraged to propose pieces for one or more of the below locations.

Artists are welcome to propose alternate interior or exterior locations within school grounds if they better suit the proposed artwork.



## Interior Locations at Arc-en-ciel

Full site plan available at [Public Art Calls & Projects \(gnb.ca\)](https://gnb.ca/public-art-calls-projects)

## Location A : library



Material(s): Painted concrete block

Space usage: Multi-purpose space for reading, learning, studying and collaborating

Users: Students; teachers

Indicated as « A » on the site plan.  
There are four potential walls: A1, A2, A3 and A4.

## Location A1: library wall 1



Dimensions : wall : 65 feet long by 15 feet high

Material(s) : painted concrete block interrupted by windows

Space usage: Multi-purpose space for reading, learning, studying and collaborating

Users : students and teachers

Indicated as « **A1** » on the site plan.

## Location A2: library wall 2



Dimensions : wall : 22 feet long by 15 feet high

Material(s) : painted concrete block

Space usage: Multi-purpose space for reading, learning, studying and collaborating

Users : students and teachers

Indicated as « **A2** » on the site plan.

## Location A3: library wall 3



Dimensions : wall : 18 feet long by 15 feet high

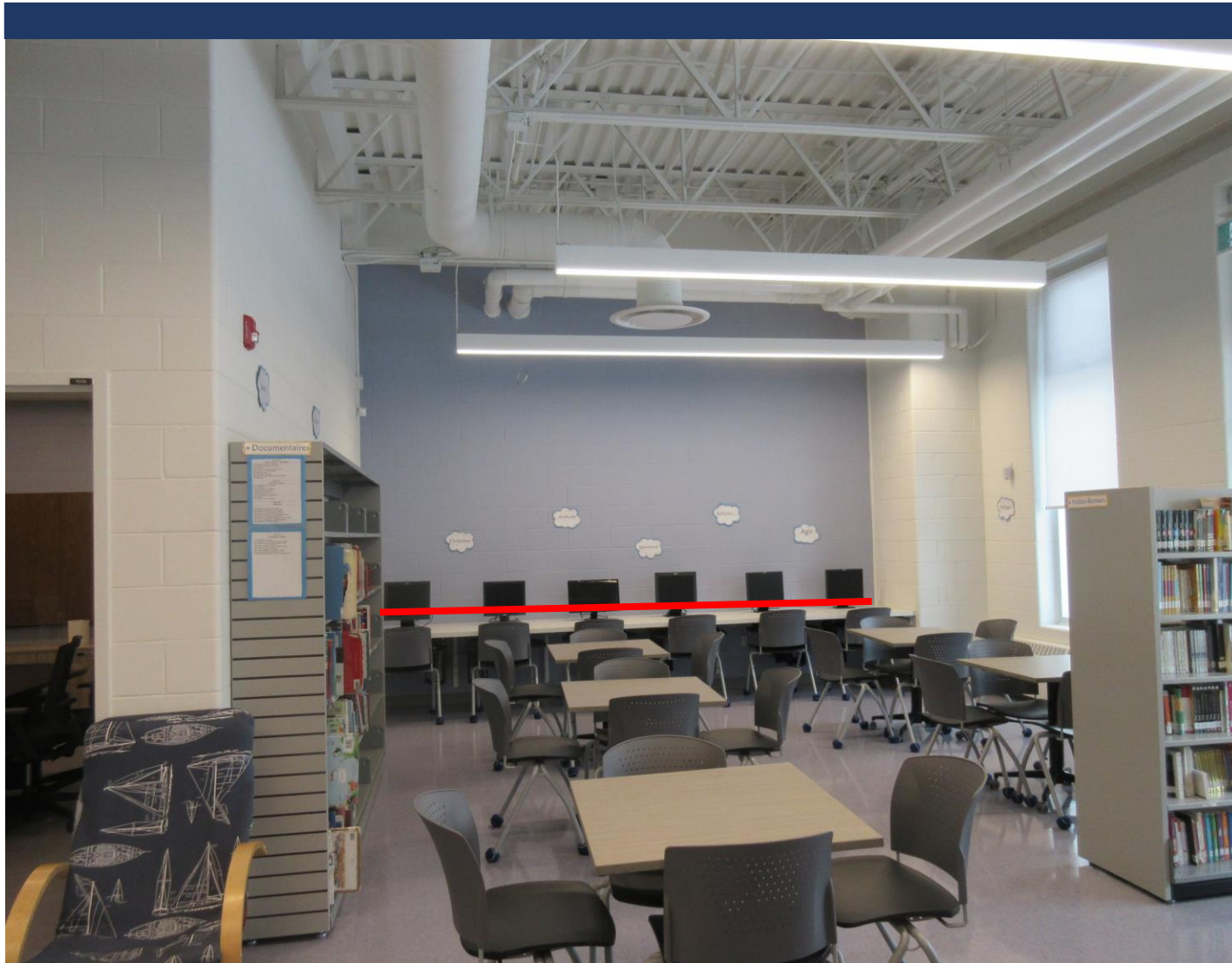
Material(s) : painted concrete block

Space usage: Multi-purpose space for reading, learning, studying and collaborating

Users : students and teachers

Indicated as « **A3** » on the site plan.

## Location A4: library wall 4



Dimensions : wall : 19 feet long by 15 feet high

Material(s) : painted concrete block

Space usage: Multi-purpose space for reading, learning, studying and collaborating

Users : students and teachers

Indicated as « **A4** » on the site plan.

## Location B1 : wall 1 of main entrance hall



Dimensions : wall : 11.5 feet long by 9 feet high

Material(s) : painted concrete block

Space usage: main entrance of school

Visibility : visible from front entrance of school and hallways

Users : students, teachers and visitors

Indicated by « **B1** » on the site plan.



## Location B2 : wall 2 of main entrance hall



Dimensions : wall : 11.5 feet long by 9 feet high

Material(s) : painted concrete block

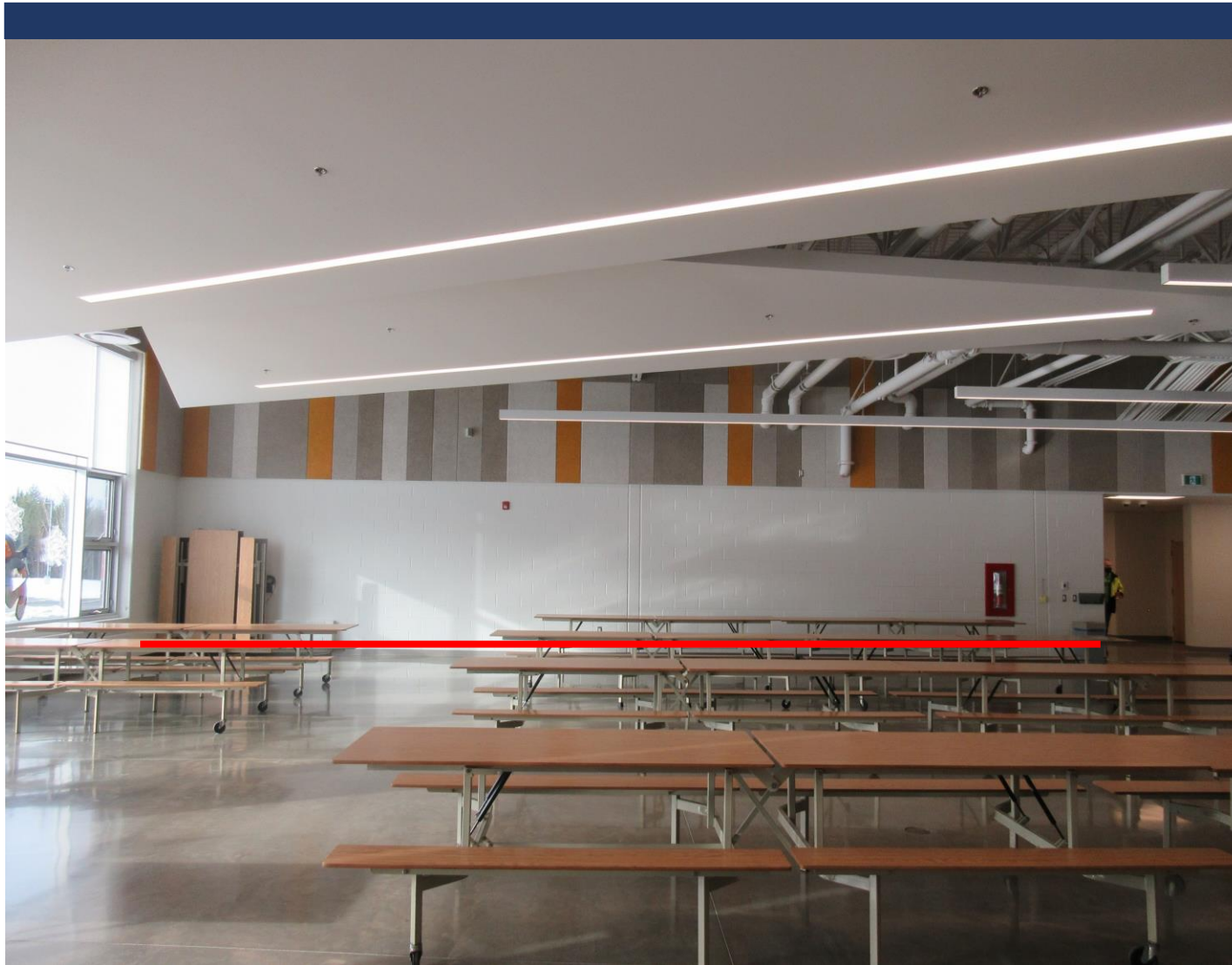
Space usage: main entrance of school

Visibility : visible from front entrance of school and hallways

Users : students, teachers and visitors

Indicated by « **B2** » on the site plan.

## Location C1: cafeteria wall 1



Dimensions : wall : 49 feet tall by 9 feet high

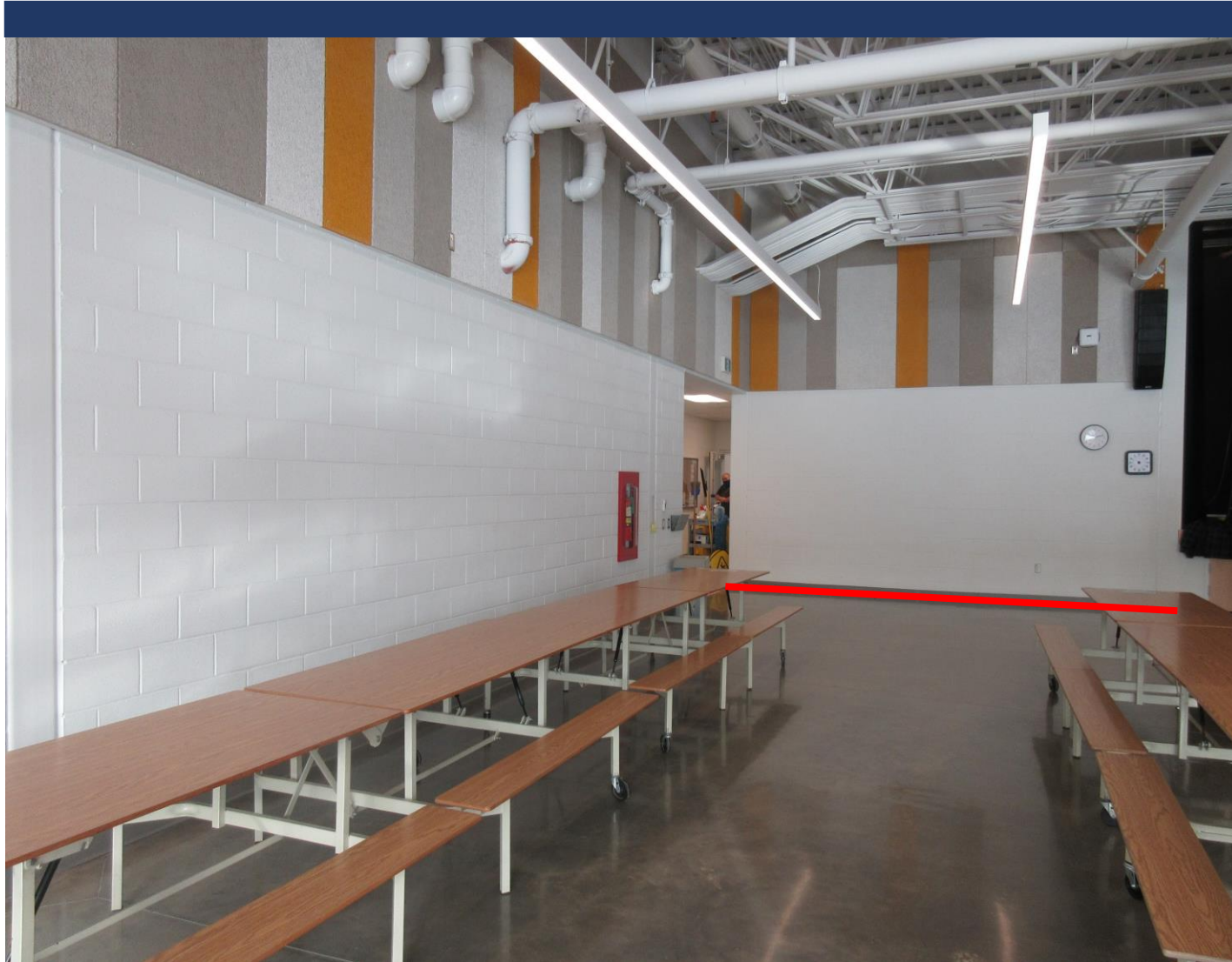
Material(s) : painted concrete block

Space usage : Multi-purpose central, high-traffic space for meals, performances and gatherings.

Users : students, teachers and visitors

Indicated by « **C1** » on the site plan.

## Location C2: cafeteria wall 2



Dimensions : wall : 19 feet tall by 9 feet high

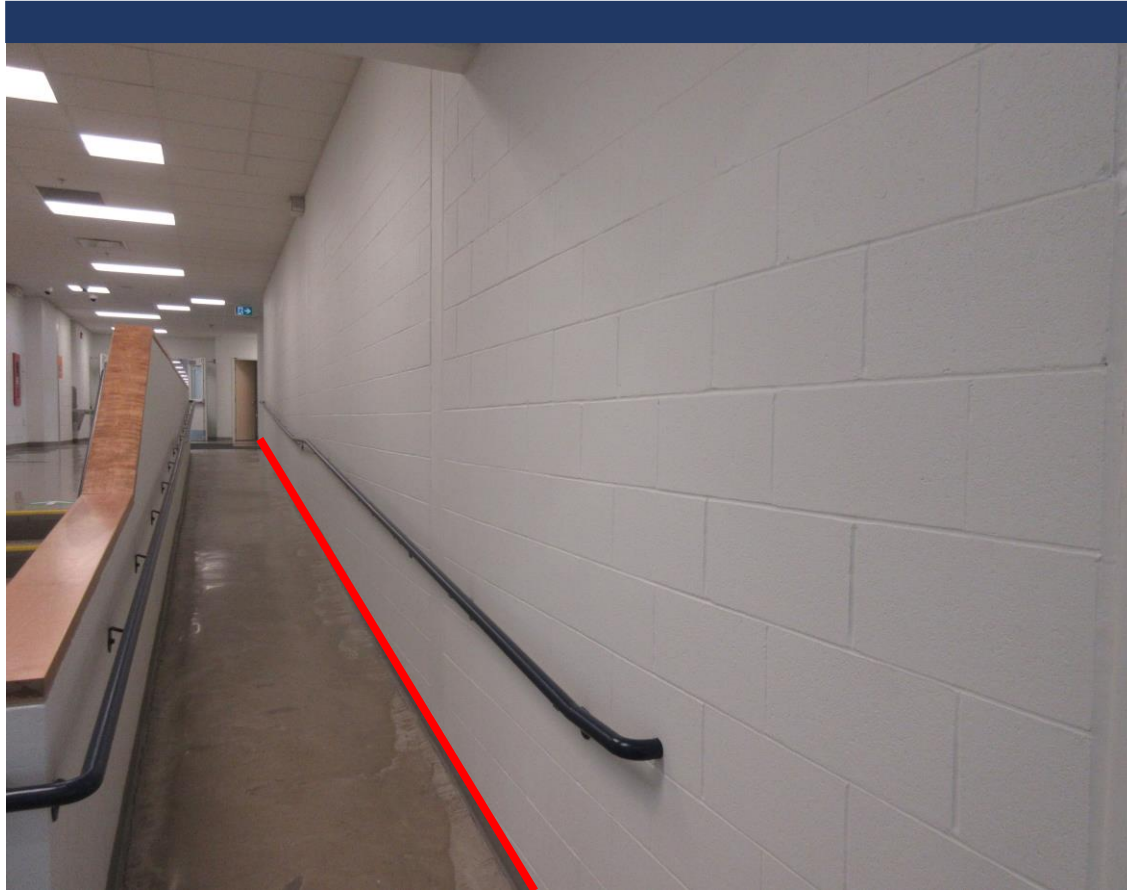
Material(s) : painted concrete block

Space usage : Multi-purpose central, high-traffic space for meals, performances and gatherings.

Users : students, teachers and visitors

Indicated by « C2 » on the site plan.

## Location D1 : central hall wall 1



Dimensions : wall : 49 feet long by 9 feet high

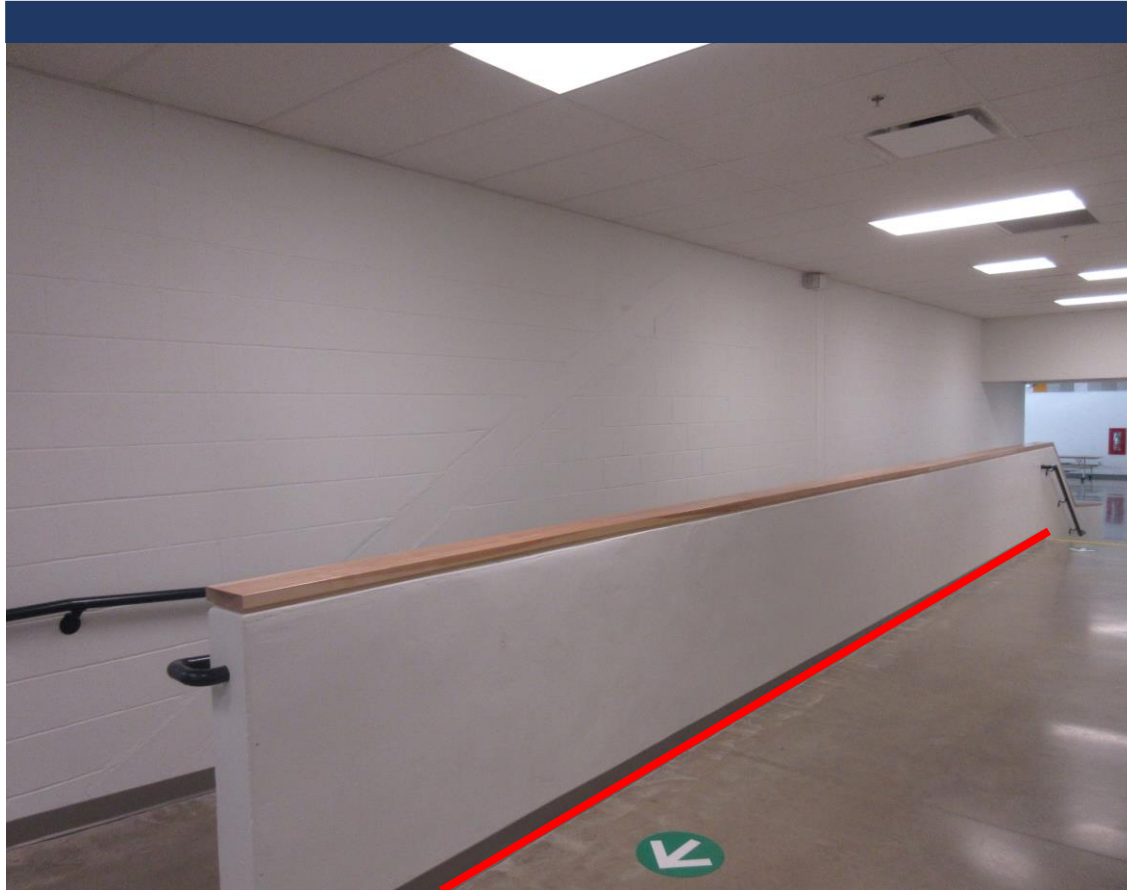
Material(s) : painted concrete block

Space usage : central hallway

Users : students and teachers

Indicated by « **D1** » on the site plan.

## Location D2 : central hall half-wall



Dimensions : half-wall : 43 feet long by 3 feet six inches high

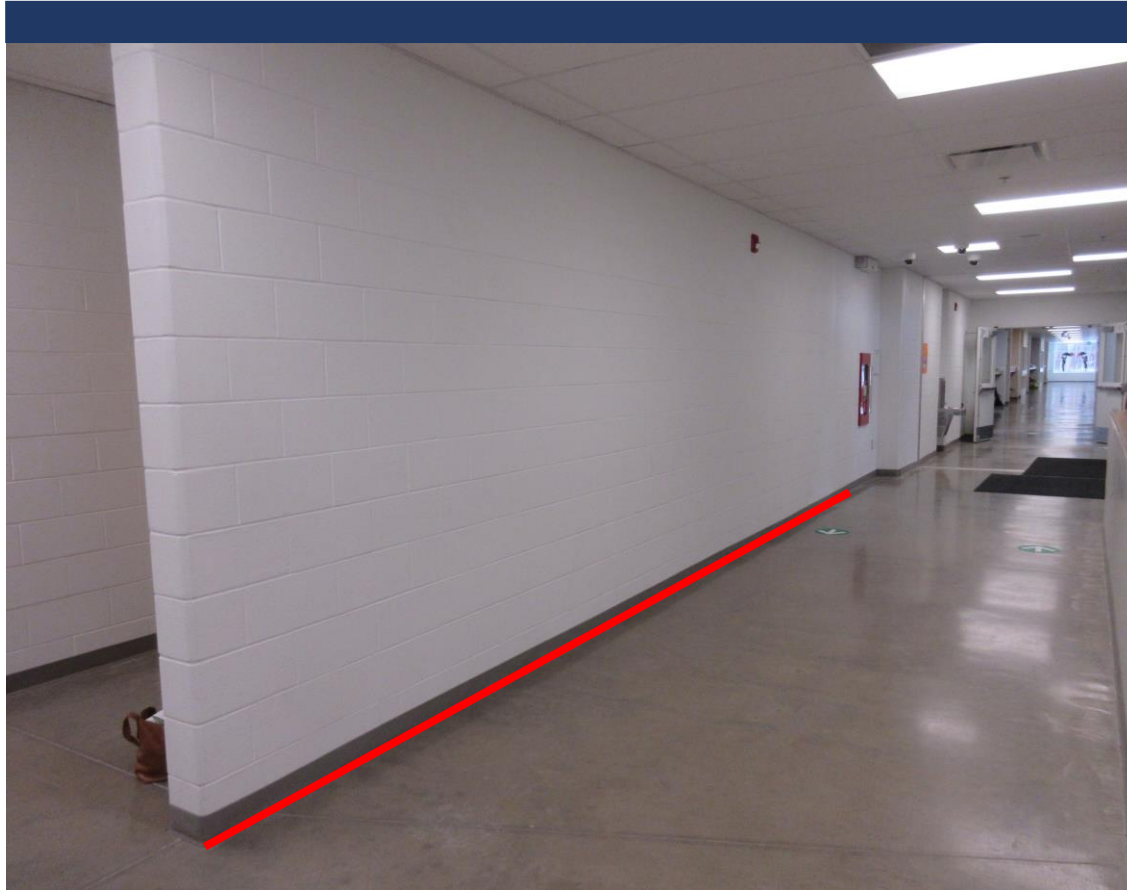
Material(s) : painted concrete block

Space usage : central hallway

Users : students and teachers

Indicated by « **D2** » on the site plan.

## Emplacement D3 : central hall wall 3



Dimensions : wall : 24 feet long by 9 feet high

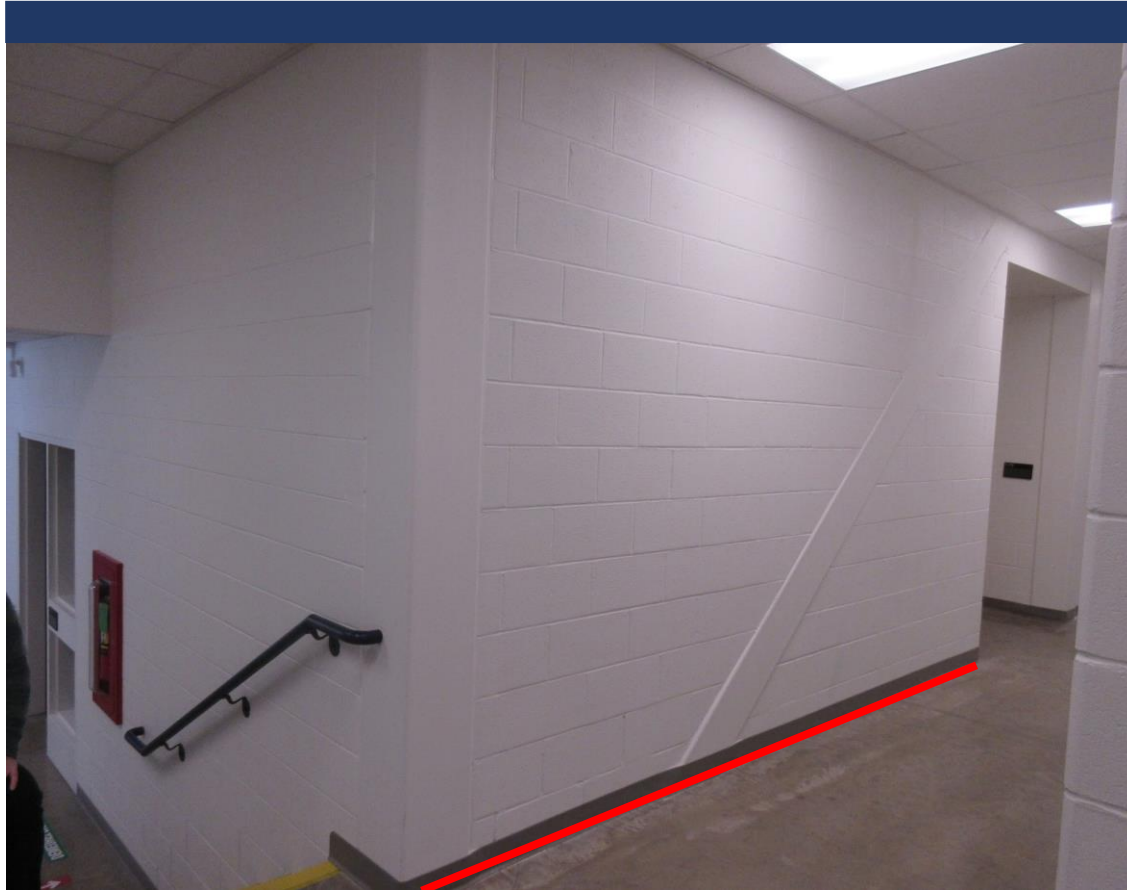
Material(s) : painted concrete block

Space usage : central hallway

Users: students and teachers

Indicated by « **D3** » on the site plan.

## Location E1 : art hallway wall 1



Dimensions : wall : 14 feet long by 9 feet high

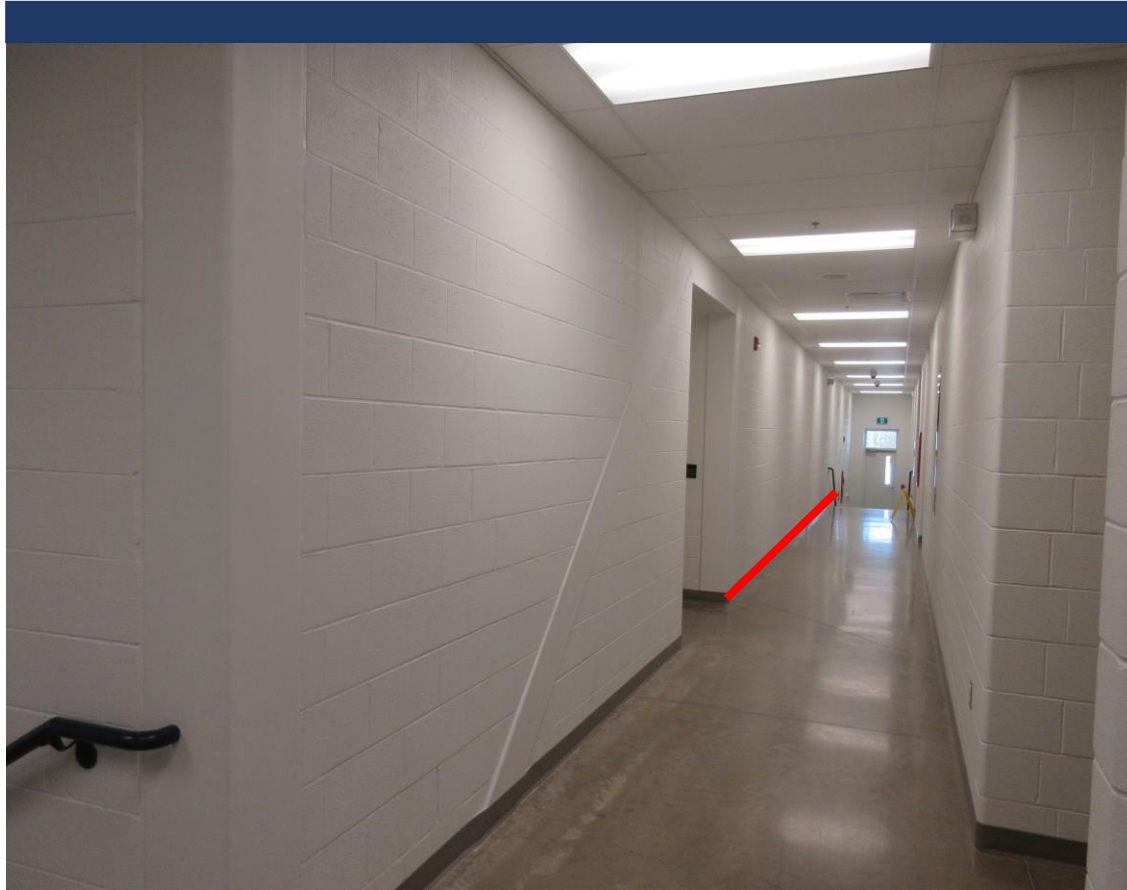
Material(s) : painted concrete block

Space usage : this hall leads to the art and music classrooms

Users : students and teachers

Indicated by « **E1** » on the site plan.

## Location E2 : art hallway wall 2



Dimensions : wall : 49 feet long by 9 feet high

Material(s) : painted concrete block

Space usage: this hall leads to the art and music classrooms

Users : students and teachers

Indicated by « E2 » on the site plan.





## Exterior Locations at Arc-en-ciel

Full site plan available at [Public Art Calls & Projects \(gnb.ca\)](https://www.gnb.ca)

## Location F : Front Entrance Green Space



Dimensions : 69 feet long by 15 feet high

Material(s) : grass

Space usage : green space next to front entrance to the school. A high traffic area.

Users : students, teachers and visitors

Visibility: visible from front entrance and parking lot

Indicated by « F » on the site plan.

## Location G : main entrance overhang



Dimensions : 47 feet long by 15 feet high

Material(s) : steel and metal

Space usage: main entrance overhang

Users: students, teachers, visitors

Visibility: visible from front entrance and parking lot

Indicated by « **G** » on the site plan.



Note: a site visit will be planned for interested artists, if possible. If shortlisted by the Evaluation Committee, exact dimensions should be site-verified by the artist if needed. Devices on walls (light switches, fire alarms, etc.) should be verified by the artist.

Questions?

Claire Gulliver  
Public Art Coordinator  
Tourism, Heritage & Culture  
[Claire.gulliver@gnb.ca](mailto:Claire.gulliver@gnb.ca)  
506.429.7246